

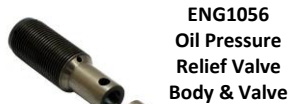


Bristol 2 Litre Ancillaries & Gaskets Parts List

- Oil Pump
- Oil Filter
- Water Pump
- Engine Gaskets
- Consumables

Engine Type 85, 100, 110

Oil Pump & Oil Filter



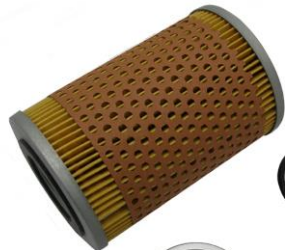
ENG1056
Oil Pressure
Relief Valve
Body & Valve



ENG1056-3
Oil Pressure
Relief Valve Spring



ENG1056-2
Oil Pressure
Relief Valve Cap
And Lock Nut



ENG1018A
Oil Filter Paper
Conversion Kit



ENG1050
Spin On Oil Filter
Sandwich Plate
Direct to head
Engines without oil
cooler



ENG1055
Spin On Oil Filter Sandwich Plate
Direct to Head
Engines with oil cooler entry/exit



OC606
(75mm x 75mm)
Spin On Type Oil Filter
Small



OC23
(95mm x 95mm)
Spin On Type Oil Filter
Large



ENG1132
Spin On Oil Filter Kit with built in thermostat
Engines with oil cooler entry/exit

Part No. Item Description

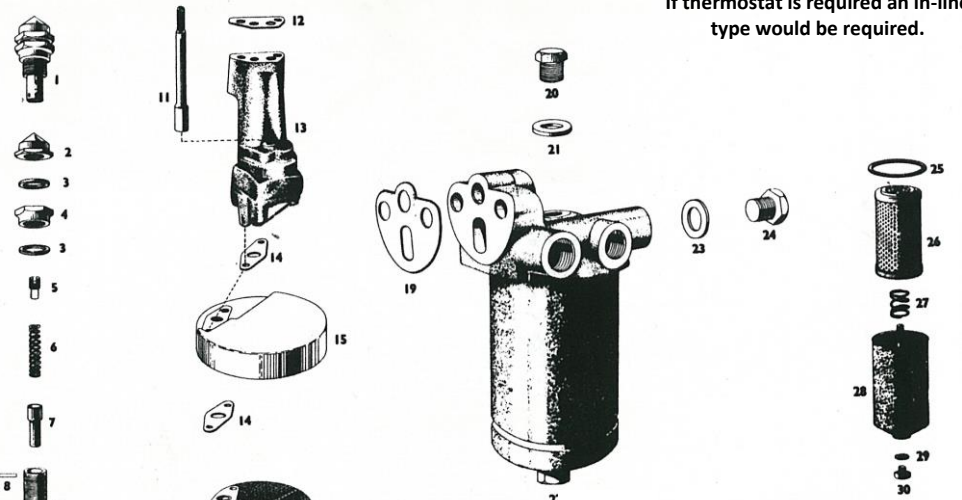
ENG1056-3	6	Oil Pressure Relief Valve Spring
ENG1056	7+9+10	Oil Pressure Relief Valve Body and Valve (New) (N360070 + N361310)
ENG1056-2	2+3+4	Oil Pressure Relief Valve Cap, Lock Nut and Washers (New) (N360030 + N360020)
ENG1208	11	Oil Pump Drive Shaft (N361830)
ENG1125	12	Oil Pump Gasket (N361440)
ENG1133N	13	Oil Pump 'Hobourn Eaton' type (New) (N361430)
ENG1065		Oil Pump Overhaul Kit
ENG1119	14	Oil Pump Pickup Gasket (N361530)
ENG1202	19	Oil Filter Housing Gasket (N360740)
ENG1018A		Oil Filter Paper Conversion Kit (OX13)
OX13		Paper Oil Filter - Use with ENG1018A kits supplied May 2014>
OX47D		Paper Oil Filter - Use with ENG1018A kits supplied >May 2014
ENG1132		Spin On Oil Filter Kit - with built in thermostat + exit/entry for oil cooler applications
ENG1050		Spin On Oil Filter Sandwich Plate (direct to head, engines without oil cooler)
ENG1055		Spin On Oil Filter Sandwich Plate (direct to head, engines with oil cooler)
ENG1020		Oil Filter Dog Bone Extension (AC Ace)
ENG1050/1		3/8" BSF Cap Head Bolt for Spin On Oil Filter Kit (Fits with ENG1050 + ENG1055)
OC23		Oil Filter 95mm x 95mm outside Ø (for spin on conversion)
OC606		Oil Filter 75mm x 75mm outside Ø (for spin on conversion)
<i>Please Note: Oil filters OC23 and OC606 - Use with ENG1050, ENG1055 or ENG1132 (filters not inc. in kits)</i>		
OC200		Oil Cooler Fitting Kit
OC205		Oil Hose - Classic black (1m)
OC210		Oil Cooler 45° Connector (1)
OC211		Oil Cooler 90° Connector (1)
OC212		Oil Cooler Straight Connector (1)
OC213		Oil Cooler Connector Washer (1)
OC214		Oil Cooler 1/2 BSP Connector (1)
OC5133-8		10 Row Oil Cooler 1/2" BSP Fitting - 230mm Wide
OC510%/235		10 Row Oil Cooler 1/2" BSP Fitting - 235mm Wide
OC513%/235		13 Row Oil Cooler 1/2" BSP Fitting - 235mm Wide
OC516%/235		16 Row Oil Cooler 1/2" BSP Fitting - 235mm Wide
OC519%/235		19 Row Oil Cooler 1/2" BSP Fitting - 235mm Wide

Oil Coolers also available with alternative outlet thread patterns.



ENG1020
Oil Filter Dog Bone Extension

For AC Ace models, designed to fit with ENG1050 and ENG1052
If thermostat is required an in-line type would be required.



10, 13, 16 & 19
Row Oil Coolers



ENG1133S
Oil Filter Sieve Cover



ENG1208
Oil Pump
Driveshaft



ENG1133N
Oil Pump (New)



OC200 Oil Cooler Fitting Kit
(Including Oil Pipe and fittings)



ENG1065
Oil Pump Overhaul Kit

Water Pump

Part No.	Item	Description
ENG1147		Water Pump – New (complete assembly)
ENG1146A		Water Pump Overhaul (in our workshop)
ENG1148	4	Lightweight Alloy Water Pump Pulley (N350680)
ENG1159	5	17mm Fan Belt – Road Car (Like N350640)
ENG1160	5	17mm Fan Belt – Race Car (No dynamo)
ENG1161	5	17mm Fan Belt – 400 Type
ENG1162	5	17mm Fan Belt – BMW 328 Type
ENG1146B	7	Water Pump Shaft (New INR Pumps)
ENG1146C	7	Water Pump Shaft (Original Pumps)
ENG1146	7+19	Water Pump Overhaul Kit (Replaces N350710 + N350410)
ENG1147A	8	Water Pump Outlet Pipe (N350620)
ENG1118	9	Thermostat Gasket (N350630)
GTS102	10	74° Thermostat
GTS104	10	82° Thermostat (N350780)
GTS106	10	88° Thermostat
ENG11500	15+26	Water Pump Bolt Set (including washers)
FB.105/14D	15	Water Pump Bolt 5/16" BSF x 1 1/4" (short)
88G446	19	Water Pump Diaphragm Seal (Replaces N350410) Original type
ENG1150	19	Water Pump Seal – fits INRacing modified water pumps only
ENG1149	20	Water Pump Impellor (N350470)
ENG1117	23	Water Pump Gasket Outer (N350250)
ENG1158	24	Water Pump Spacer (N350230)
ENG1116	25	Water Pump Gasket Inner (N350240)
FB.105/19D	26	Water Pump Bolt 5/16" BSF x 2 3/8" (long)
ENG1147B	27	Water Pump Outlet Pipe Stud Set (3)
HOSE25		Water Hose Kit 2 x 1m x 38mm Water Hose lengths + required clips
HOSE13		38mm x 45' Short Hose 4" Legs
HOSE14		38mm x 90' Long Hose 6" Legs
HOSE15		38mm x 135' Short Hose 4" Legs
HOSE1		38mm Straight Hose (1 Metre)
HOSE16		38mm 180' Hose (U-Bend)
HOSE17		38mm 3" Joiner
SST16K		5/8" Take Off Adapter Kit for 16mm Hose
SST13K		1/2" Take Off Adapter Kit for 13mm Hose
10964		Radiator Neck 55mm / 3/8" Outlet
VF23		Flexi Water Hose 38mm x 150mm
VF237		Flexi Water Hose 38mm x 400mm
VF266		Flexi Water Hose 38mm x 450mm
EFC38		Thermal Fan Switch for Hose
INR1216		Racing Radiator



ENG1147
Complete water pump assembly. Our brand new casting machined and fitted with all new internals and gaskets, spacer plate and thermostat of your choice.



88G446
Original Type seal



ENG1150
Modern Type Improved Seal
(Can only be fitted to pumps modified by INRacing)

ENG1146A

We can overhaul your water pump in our workshop. We machine the casing and fit an improved modern type seal, new shaft, our new impellor, lightweight alloy pulley, gaskets plus new alloy spacer and bolts where required.



74° 82° 88° Thermostat



ENG1147B
Water Pump Outlet Pipe Stud Set (3)



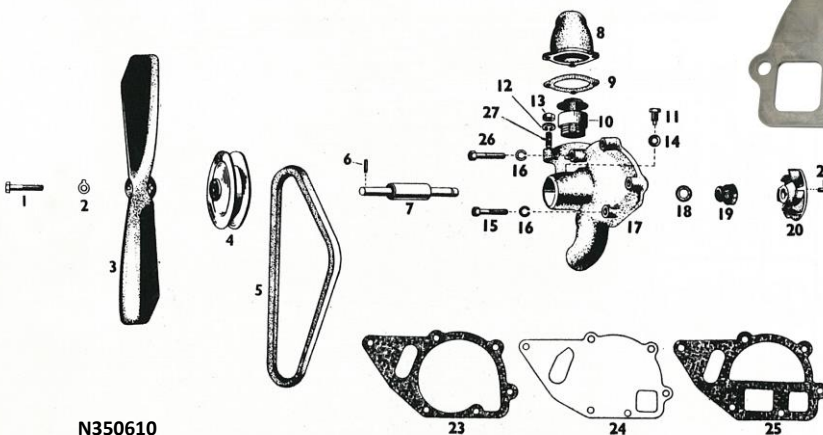
ENG1147A
Water Pump Outlet Pipe



ENG1158
Water Pump Spacer Plate



ENG11500
Water Pump Bolt Set
(inc Washers)



N350610

We can recondition your fan, or supply a re-conditioned unit



HOSE14
38mm with 90° Bend



HOSE15
38mm with 135° Bend



HOSE16
38mm with 180° Bend



HOSE25
Water Hose Kit - 2 x 1m x 38mm Water Hose lengths + required clips & spacer



ENG1148 Alloy Water Pump Pulley
(Hard Anodised)



ENG1149 Water Pump Impellor



Take Off Adapter Kit
SST13K 1/2" for 13mm Hose
SST16K 5/8" for 16mm Hose



ENG1146 Overhaul Kit

New shaft
and original
type seal

Consumables

If you are looking for something you can't see listed, please contact us with your requirements.

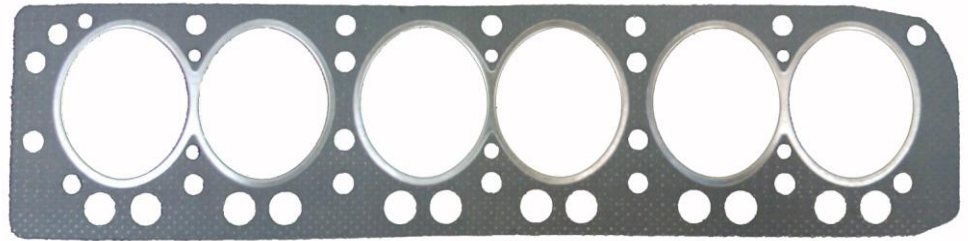
Part No.	Description
BSF604161	½ BSF x 2" Bolt
BSF604201	½ BSF x 2½" Bolt
BSF604241	½ BSF x 3" Bolt
BSF605121	5/16 BSF x 1½" Bolt
BSF605141	5/16 BSF x 1¾" Bolt
BSF605161	5/16 BSF x 2" BSF Bolt
BSF605201	5/16 BSF x 2½" BSF Bolt
BSF605241	5/16 BSF x 3" BSF Bolt
BSF606101	3/8 BSF Propshaft Bolt
BSF606121	3/8 BSF x 1.5" BSF Bolt
BSF606161	3/8 BSF x 2" BSF Bolt
BSF606201	3/8 BSF x 2.5" BSF Bolt
BSF606241	3/8 BSF x 3" BSF Bolt
BSF607241	7/16 BSF x 3" BSF Bolt
BSF607281	7/16 BSF x 3.5" BSF Bolt
BSF608201	½ BSF x 2.5" BSF Bolt
BSF608241	½ BSF x 3" BSF Bolt
FN104/L	¼" BSF Nut
AJD81052	5/16" BSF Nut
GHF202BSF	3/8" BSF Nut
FN107/L	7/16" BSF Nut
GHF204BSF	½" BSF Nut
GHF205BSF	5/8" BSF Nut
EXH1005	¼" BSF Brass Nut
N370060	5/16" BSF Brass Nut
GHF22BSF	5/16" BSF Nylock Nut
GHF242BSF	5/16" BSF Philidas Nut
AJD8204Z	¼" BSF Half Nut

Part No.	Description
AJD4547Z	5/16" BSF C/Sunk Screw x ½"
RX1382	Exhaust Wrap 2" x 50ft
06B-2	Timing Chain Duplex Link
¼BSF-45	Greaser - 45°
¼BSF-90	Greaser - 90°
¼BSF-ST	Greaser - Straight
191237	Cloth Insulating Tape
546-9991	¼ BSF Threaded Rod 1ft
546-9992	5/16 BSF Threaded Rod 1ft
546-9993	3/8 BSF Threaded Rod 1ft
EXH1004	¼ BSF x 1.5" Stud
N321750	5/16 BSF Stud
IAP38-135	38mm x 135° Aluminium Pipe
IAP38-45	38mm x 45° Aluminium Pipe
IAP38-90	38mm x 90° Aluminium Pipe
INR1181	¼ BSF Domed Nut
INR1200	Wheel Stud 7/16 BSF Double End
INR1212	Ball Joint Cover
INR1217	Bowden Cable 2mm x 2.5m (with nipple end)
467-0010	Bowden Cable 1.5mm (off roll)
467-0020	Bowden Cable 2mm (off roll)
INR1220	Oil Strainer Mesh
MAS83.4	Air Intake Duct 83mm I.D. (off roll)
3H550	Bronze Banjo Washer 7/16"
233220A	Bronze Banjo Washer 3/8"
27H7166	Brake Bleed Screw 3/8 BSF
B573	Brake Male Union 3/8 BSF



Bristol 400 at Mille Miglia 2016; fully restored and prepared by INRacing

Gaskets



ENG1070

1.6mm Head Gasket (Like N322880)

ENG1071

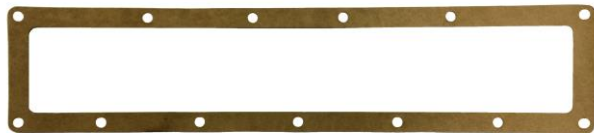
2.0mm Head Gasket

ENG1105-1.6

1.6mm Full Engine Gasket Set – ENG1104 + ENG1070 + ENG1129

ENG1105-2.0

2.0mm Full Engine Gasket Set – ENG1104 + ENG1071 + ENG1129



ENG1121 Side Plate

Bottom End Gasket Set ENG1129

Includes all gaskets shown below



ENG1115
Breather Cap



ENG1114
Breather



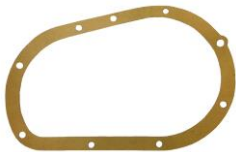
ENG1201
Distributor Tower



ENG1120
Tachometer



ENG1202
Oil Filter Housing



ENG1113
Timing Cover



ENG1123
Fuel Pump



ENG1119
Oil Pump Pick Up



ENG1125
Oil Pump



ENG1124
Sump Set (4)

Top End Gasket Set (Excluding Head Gasket)

ENG1104

Includes all gaskets shown below



ENG1122
Exhaust Manifold (2)



ENG1116
Water Pump Inner



ENG1117
Water Pump Outer



ENG1118
Thermostat



ENG1204
Cylinder Head
Seal Set (4)



ENG1112
Cylinder Head
End Plate (2)



ENG1126
Inlet Manifold (3)



ENG1111
Rocker Cover End



ENG1127
Carb Gasket Set (3)



ENG1110
Rocker Cover
(Exhaust)



ENG1109
Rocker Cover
(Inlet)

ENG1128 Rocker Cover Gasket Set (3) (ENG1109 + ENG1110 + ENG1111)