



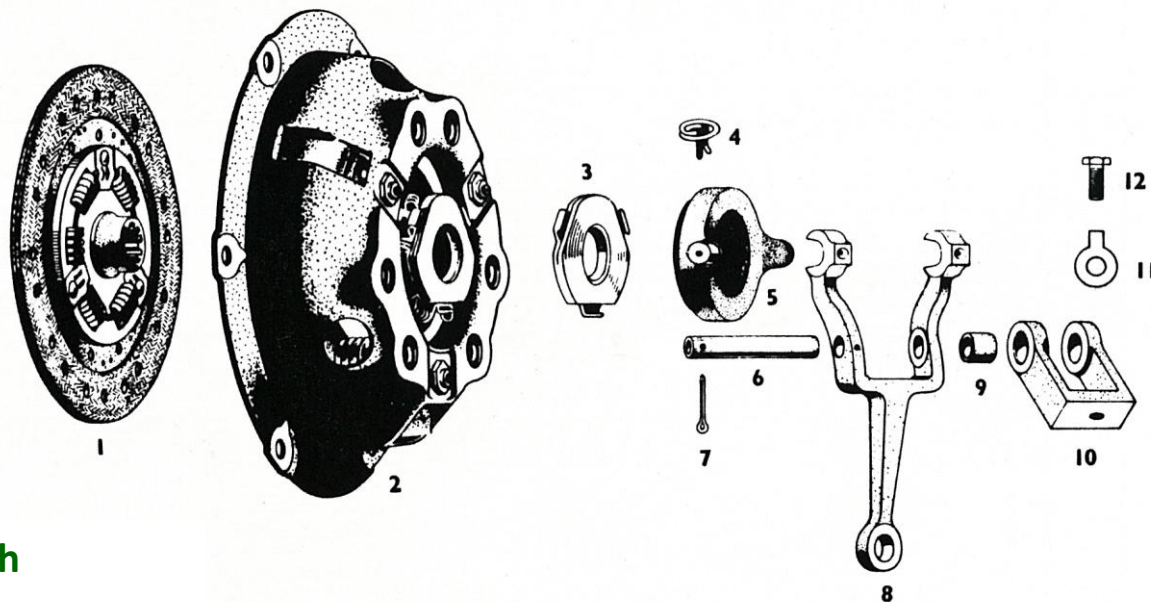
Bristol 2 Litre Clutch & Gearbox Parts List

Engine Type 100 C, 100 D and 100 D2

Gearbox Type BWCR.9 and BWCR.12

We can also supply parts for 85 Series and BMW engines.

Original Bristol part numbers are used for reference purposes only. Errors & Omissions Excepted.



Clutch



+44 (0)115 978 0663

Email: info@inracing.co.uk

Part No.	Item No.	Description
GBX1213	4	Clutch Bearing Clip
GRB113	5	Carbon Release Bearing (Like N440490)
GRB113A	5	Carbon Release Bearing Conversion
GBX1157		Clutch Release Bearing (Standard)
GBX1138		Clutch Bearing Conversion Kit (from carbon to standard)
GBX1191		Clutch Arm Adjusting Nut (for conversion kit)

Clutch Kits for Road Cars (release bearing not included)

GBX1050	7.5" Clutch Kit (Diaphragm Cover) - uses standard bearing Includes: Clutch Plate 7.5" Clutch Cover 7.5"
GBX1051	8" Clutch Kit (Spring Cover) - uses carbon bearing Includes: GBX1164 Clutch Plate 8" Clutch Cover 8"
GBX1052	8" Clutch Kit (Diaphragm Cover) - uses carbon bearing (Standard Road Car) Includes: GBX1164 Clutch Plate 8" GBX1160 Clutch Cover 8"
GBX1056	8.5" Clutch Kit (Diaphragm Cover) - uses standard bearing Includes: GBX1164 Clutch Plate 8.5" Clutch Cover 8.5"
GBX1053	8.5" Clutch Kit (Spring Cover) - uses carbon bearing Includes: GBX1163 Clutch Plate 8.5" Clutch Cover 8.5"
GBX1055	8.5" Clutch Kit (Diaphragm Cover) - uses carbon bearing Includes: GBX1160 Clutch Cover 8.5" GBX1163 Clutch Plate 8.5"

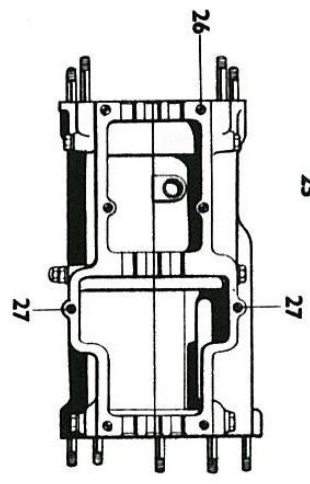
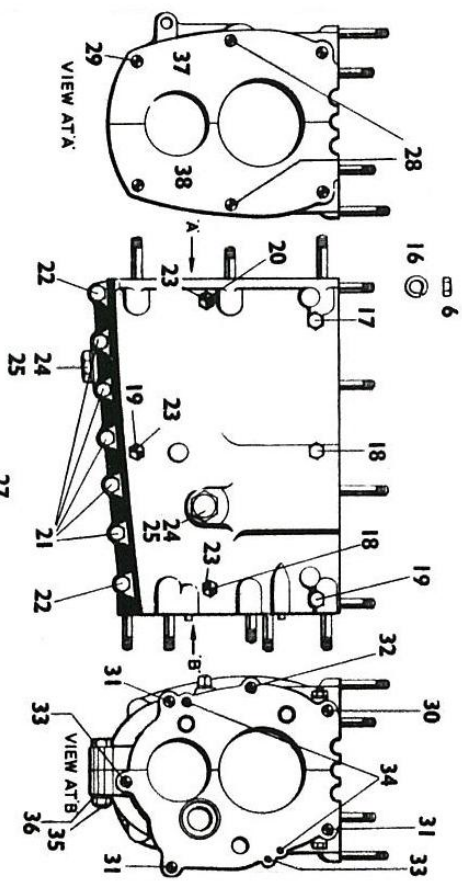
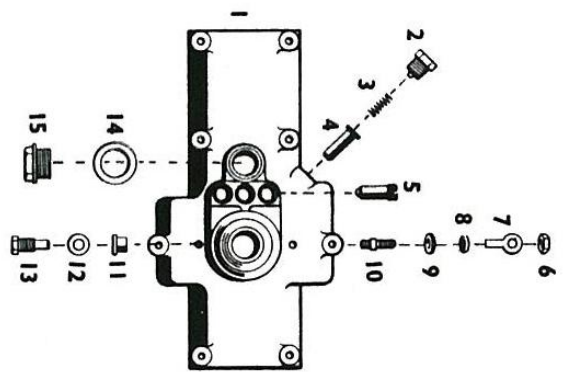
Clutch Plate Only

GBX1162	7.5" Clutch Plate (Sports Application)
GBX1164	8" Clutch Plate (Standard Application)
GBX1165	8" Clutch Plate (Sports Application)
GBX1163	8.5" Clutch Plate (Standard Application)
GBX1166	8.5" Clutch Plate (Sports Application)

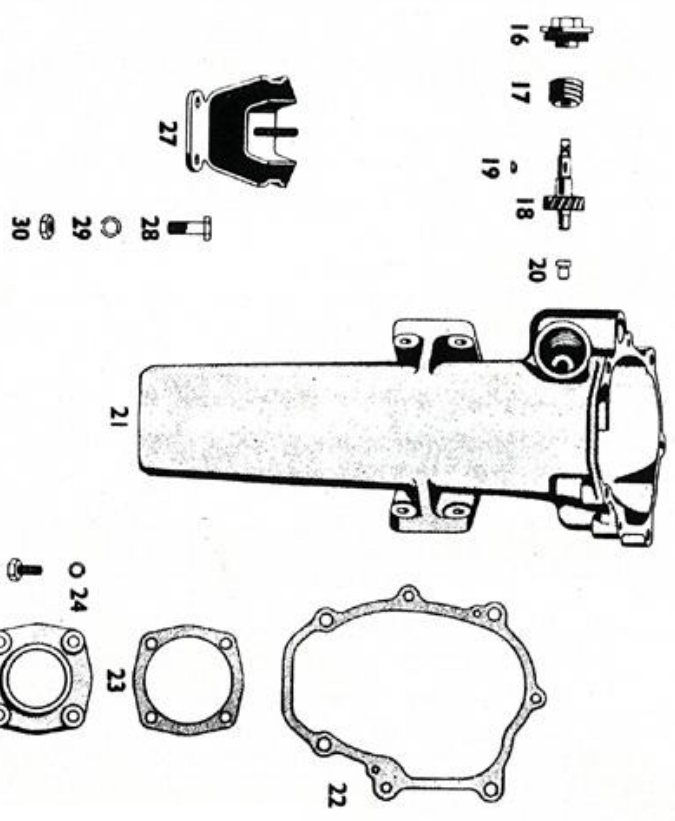
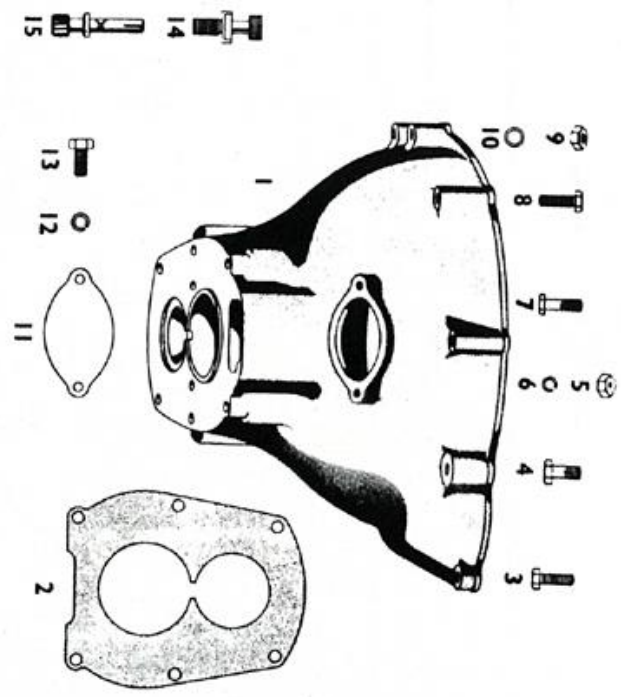
Clutch Cover Only

GBX1214	7.5" Diaphragm Clutch Cover (Standard Application) - uses carbon bearing
GBX1214H	7.5" Diaphragm Clutch Cover (Sports Application) - uses carbon bearing
GBX1160	8"/8.5" Diaphragm Clutch Cover (Standard Application) - uses carbon bearing
GBX1161	8"/8.5" Diaphragm Clutch Cover (Sports Application) - uses carbon bearing
GBX1161H	8" Diaphragm Clutch Cover (Race Application) - uses carbon bearing





Gearbox Casing & Cover



Gearbox



+44 (0)115 978 0663

Email: info@inracing.co.uk

Gearbox Casing & Cover

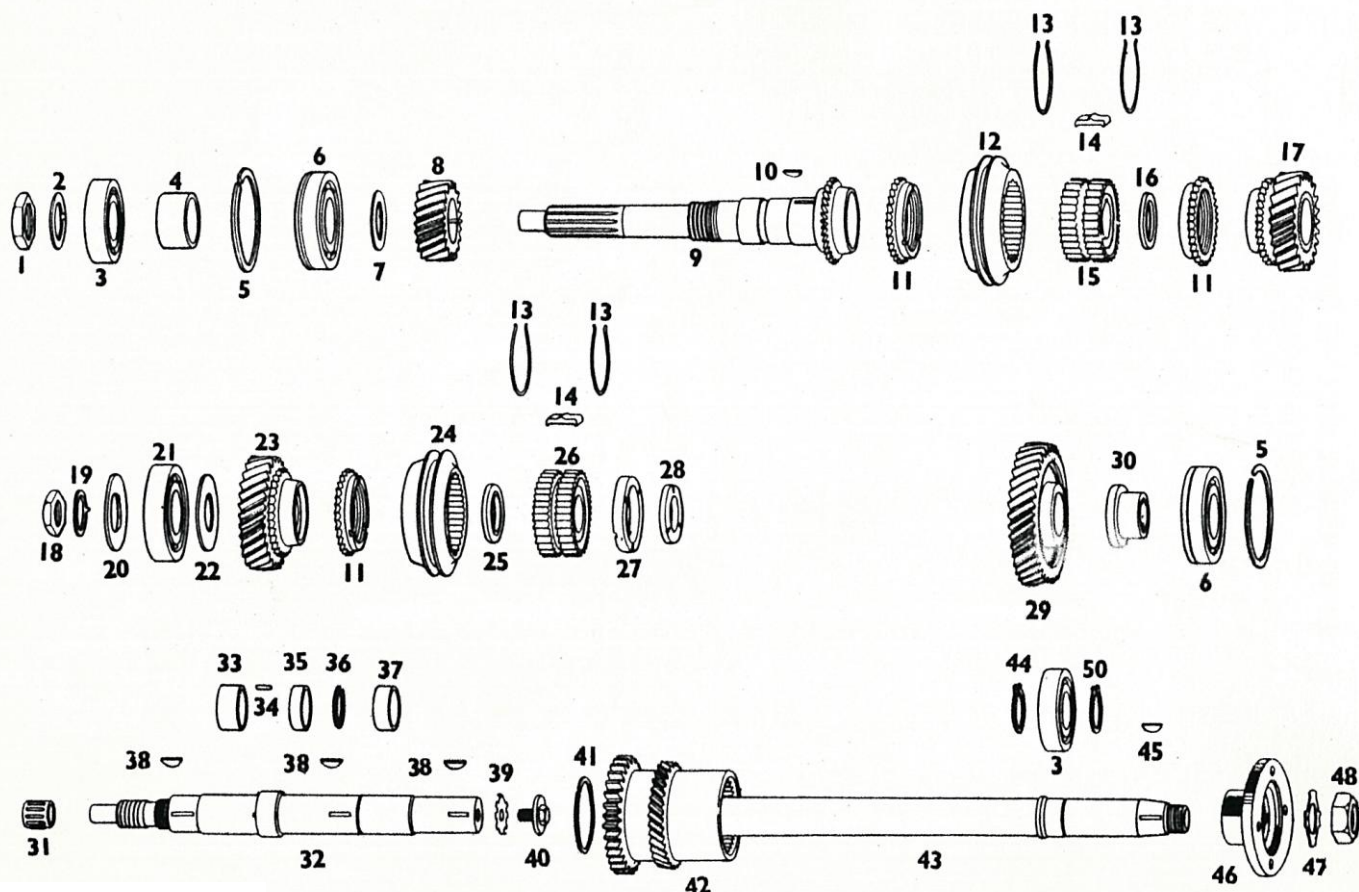
Part No.	Item No.	Description
N450020	1	Gearbox Cover
N452750	5	Selector Ball Unit - Reverse Marked 'R'
FN.104/L	6	Nut ¼" BSF
AGS.162/E	12	Spring Washer – Pivot Screw
N451740	13	Pivot Screw – Gear Lever
AGS.585/D	16	Spring Washer
N455750		Copper Washer (under domed nut only)
N455360	28	Stud – Short – Clutch Casing
N455340	29	Stud – Long – Clutch Casing
N455370	30	Stud – Short – Extension Bracket
N455350	31	Stud – Long – Extension Bracket
N455380	32	Stud – Short – Extension Bracket
N455260	33	Stud – Long – Extension Bracket
FN.105/L	35	Nut 5/16" BSF
AGS.585/E	36	Spring Washer



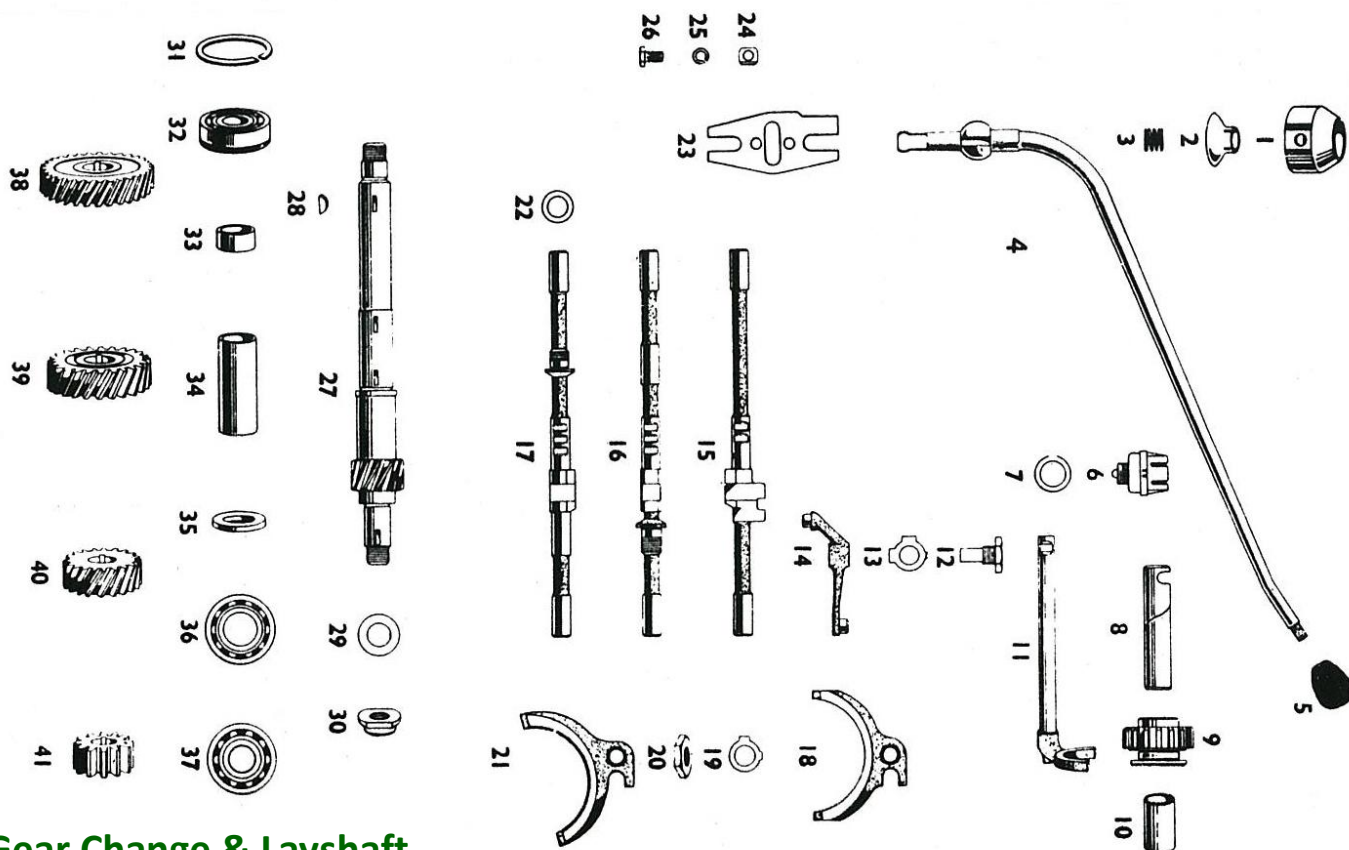
Gearbox

Part No.	Item No.	Description
N451010	14	Union (Speedo Drive)
N454240	15	Gear (Speedo 2 nd Redn. Driven)
N451890	16	Cover (Speedo 1 st Redn. Shaft)
N454230	17	Worm
N451350	18	Gear (Speedo 1 st Redn. Driven)
N451170	21	Gear Box Extension Unit (Second hand)
N450890	25	End Plate
GBX1217	2 + 22 + 23	Gearbox Gasket Set
GBX1210	27	Gearbox Mounting

Gearbox parts can be supplied, please contact us with your requirements.



Main Shaft



Gear Change & Layshaft



+44 (0)115 978 0663

Email: info@inracing.co.uk

Main Shaft

Part No.	Item No.	Description
N452390	3	Bearing – Front Drive Shaft
N451550	6	Bearing – Drive Shaft
N455500	11	Synchroniser Blocker Ring
N453610	12	Sliding Hub 3 rd and 4 th
N453020	13	Retaining Ring
N453600	15	Hub Fixed 3 rd and 4 th
N453540	23	Hub Free 2 nd Gear
N453550	24	Sliding Hub – 1 st and 2 nd
N453590	26	Hub Fixed 1 st and 2 nd
	28	Layshaft / Mainshaft Woodruff Key (Each)
N453780	29	Hub Unit – 1 st Gear (Second hand)
N453000	32	Main Driving Shaft Unit
N451360	42	Hub, Reverse and Speedo Unit
N450370	43	Extension Shaft (Second hand)
N704112	46	Companion Flange (Second hand)
GBX1212	11	Gearbox Synchro Ring (N455500)
GBX1032	32	Gear-Box Main Shaft (N453000)
GBX1216	12 + 15	3 rd / 4 th Gear Hub Assy (N453610 + N453600) (Not sold separately)
GBX1215	24 + 26	1 st / 2 nd Gear Hub Assy (N453550 + N453590) (Not sold separately)

Gear Change & Layshaft

BWCR9 Gearbox

Part No.	Item No.	Description
N455730	4	Gear Change Lever (Needs machining to suit)
515500-45	6	Lucas Reverse Light Switch
N451000	8	Spindle – Reverse Gear Idler
N451160	9	Reverse Gear – Idler – with Bush
N450360	11	Fork Selector – Reverse
N450860	12	Pivot Pin
GBX1150	14	Fulcrum Lever – Reverse N450430)
N450180	15	Selector Shaft – Reverse
N453630	16	Selector Shaft 1 st and 2 nd
N453640	17	Selector Shaft 3 rd and 4 th
N453200	27	Layshaft (Second hand)
N450320	30	Nut – Layshaft
N450690	33	Distance Piece – Short
N450700	34	Distance Piece – Long
N453430	38	Gear – Layshaft – Driving
N453460	39	Gear – Layshaft – 3 rd
N450270	40	Gear – Layshaft – 2 nd
N455640	41	Gear – Layshaft - Reverse